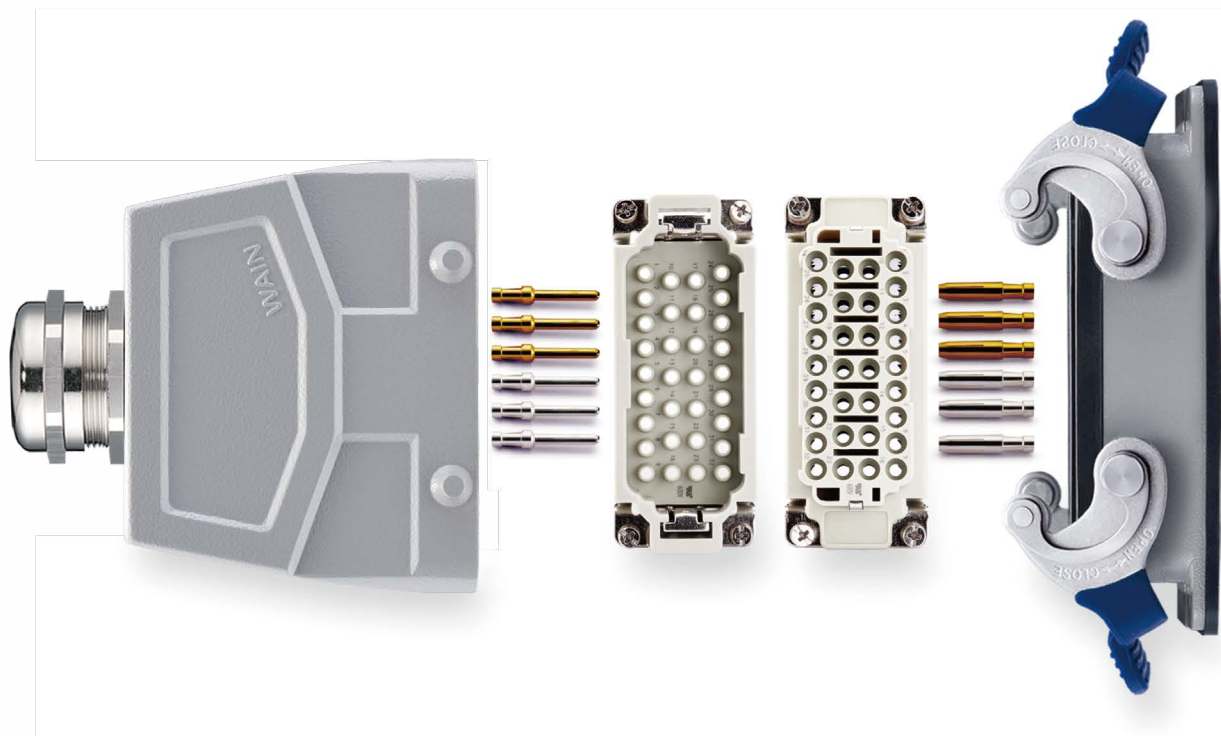



# HEE SERIES

High density connector



## HEE SERIES High density inserts

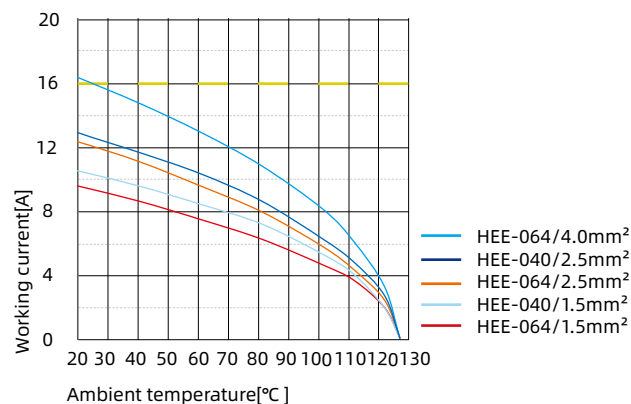
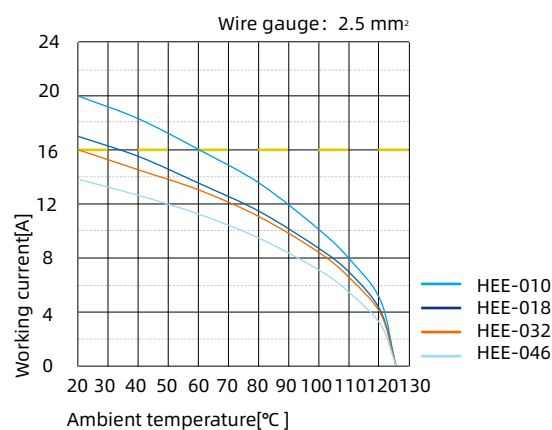
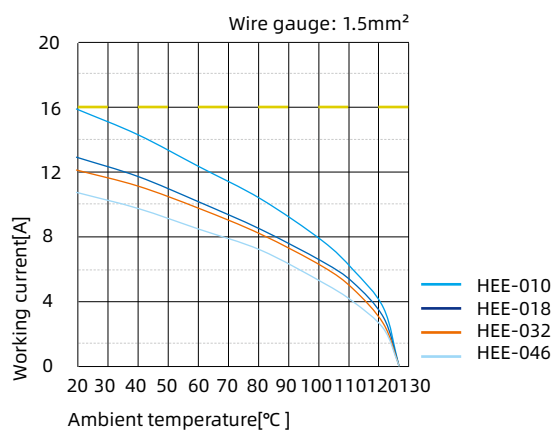
### Technical characteristics

Specifications	DIN EN 60 664 DIN EN 61 984
Approvals	
<b>Inserts</b>	
Number of contacts	10,18,32,40,46,64,64(2x32), 92(2x46)+PE
<b>Electrical data acc. to EN 61 984</b>	
-Rated current	16A
-Rated voltage	500V
-Rated impulse voltage	6kV
-Pollution degree	3
-Pollution degree 2 also	16A 830V 8kV 2
Rated voltage acc. to UL/CSA	600V
Insulation resistance	$\geq 10^{10}\Omega$
Material	polycarbonate
Limiting temperatures	-40°C ...+125°C
Flammability acc. to UL 94	V0
Mechanical working life(mating cycles)	$\geq 500$
<b>Contacts</b>	
Material	copper alloy
Surface	hard-gold plated hard-silver plated
<b>Crimp terminal</b>	
-Wire gauge	0.14-4.0mm <sup>2</sup>
-AWG	26-12
-Stripping length	7.5mm
-Contact resistance	$\leq 1m\Omega$
<b>Spring terminal(Quick-in)</b>	
-Wire gauge	0.5-2.5mm <sup>2</sup>
-AWG	20-14
-Stripping length	10 $\pm$ 0.5mm
-Contact resistance	$\leq 3m\Omega$

### Current carrying capacity

The current carrying is limited by maximum temperature of materials for inserts and contacts including terminals

Control and test procedures according to DIN EN 60512-5

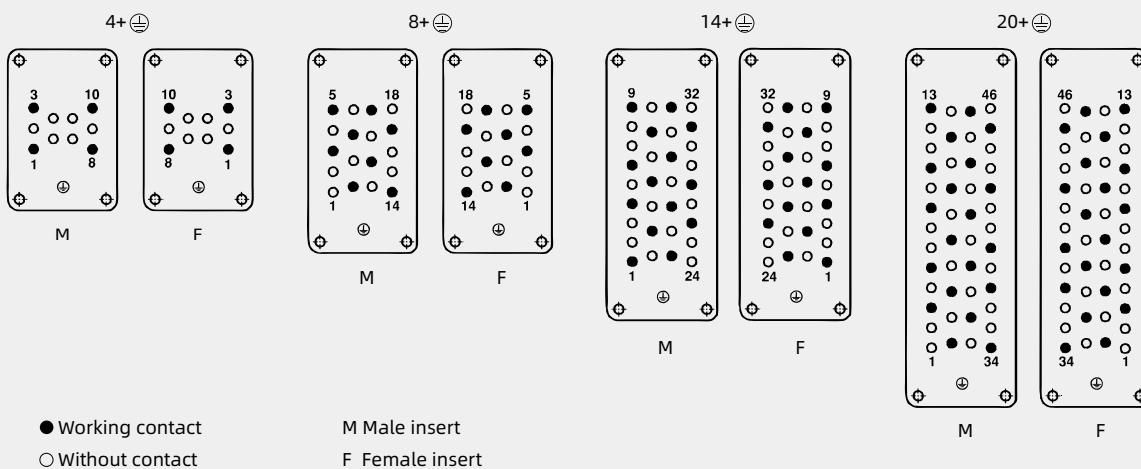


## HEE Modified contact arrangement up to 1000 V

The connector series HEE equipped with all contacts may be used for voltages up to 500 V~ pollution degree 3. A modified contact loading arrangement permits use up to 1000 V~ pollution degree 3 also in pollution degree C. Fully equipped connectors may also be used up to 1000 V~ but in a lower pollution degree. According to DIN EN 61 984 connectors should not be coupled or decoupled under electrical load.

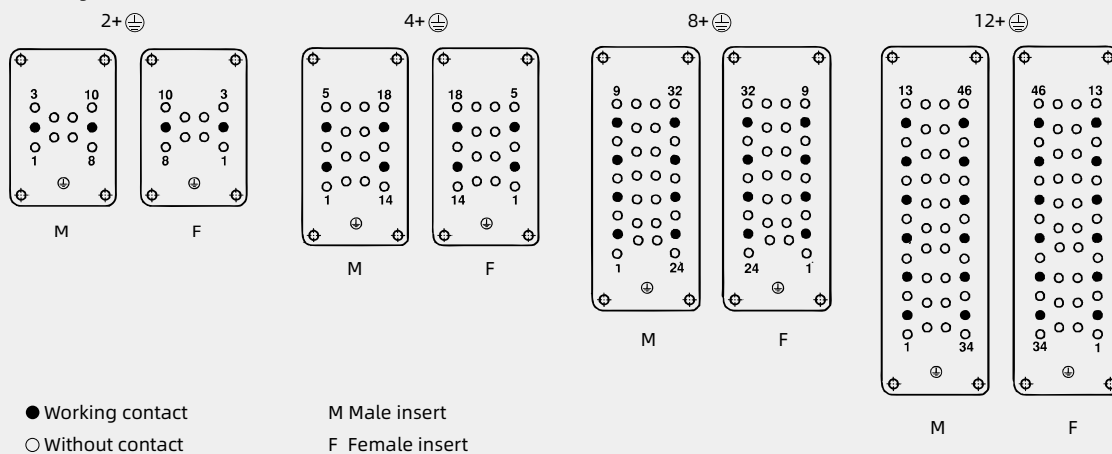
### Contact arrangement view from termination side

690 V Pollution degree 3



### Contact arrangement view from termination side

1000 V Pollution degree 3



# HEE-010 High density inserts

500V 16A 10+

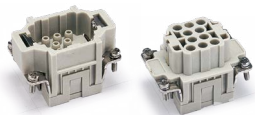


## Inserts

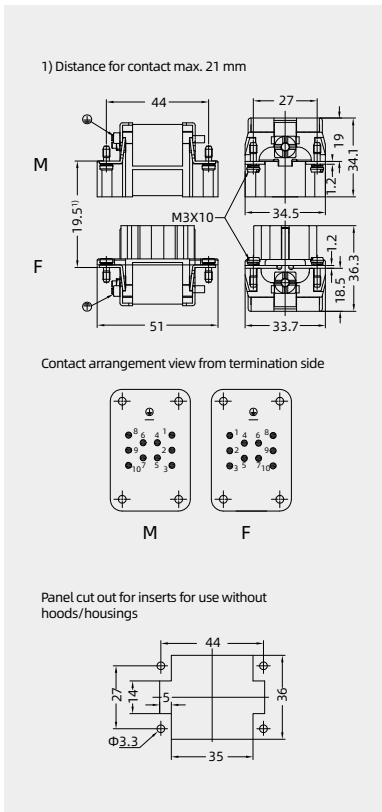
Hoods/Housings: size 6B, please find the details on page 15-25~15-38.2.

### Crimp terminal

order crimp contacts separately



Insert	Designation	Order No.
Male	HEE-010-MC	123 010 010 0001
Female	HEE-010-FC	123 010 020 0001



## Crimp contacts

### Crimp contacts 16A

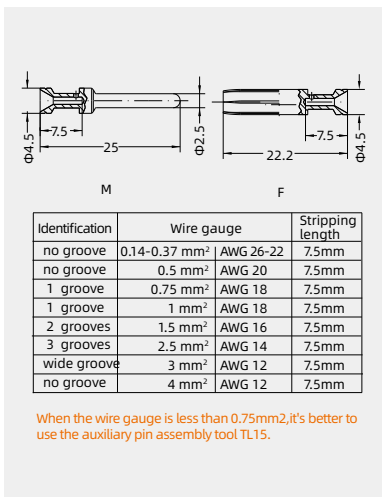
Contact resistance ≤ 1mΩ  
silver plated



gold plated



Male	Order No.	Female	Order No.
CESM-0.37	101 019 110 0301	CESF-0.37	101 019 120 0301
CESM-0.50	101 019 110 0401	CESF-0.50	101 019 120 0401
CESM-0.75	101 019 110 0601	CESF-0.75	101 019 120 0601
CESM-1.0	101 019 110 0801	CESF-1.0	101 019 120 0801
CESM-1.5	101 019 110 0901	CESF-1.5	101 019 120 0901
CESM-2.5	101 019 110 1001	CESF-2.5	101 019 120 1001
CESM-3.0	101 019 110 1101	CESF-3.0	101 019 120 1101
CESM-4.0	101 019 110 1201	CESF-4.0	101 019 120 1201
CEGM-0.37	101 019 210 0301	CEGF-0.37	101 019 220 0301
CEGM-0.50	101 019 210 0401	CEGF-0.50	101 019 220 0401
CEGM-0.75	101 019 210 0601	CEGF-0.75	101 019 220 0601
CEGM-1.0	101 019 210 0801	CEGF-1.0	101 019 220 0801
CEGM-1.5	101 019 210 0901	CEGF-1.5	101 019 220 0901
CEGM-2.5	101 019 210 1001	CEGF-2.5	101 019 220 1001
CEGM-3.0	101 019 210 1101	CEGF-3.0	101 019 220 1101
CEGM-4.0	101 019 210 1201	CEGF-4.0	101 019 220 1201



More crimp contacts 16A see P13-04.

### Tools

#### Crimping tool



#### Contact removal tool



Wire gauge	Designation	Order No.
0.14-4mm <sup>2</sup>	TL02G	198 001 001 0011
Wire gauge: 0.14-0.37mm <sup>2</sup> please select TL02 Crimping tool.		
Application	Designation	Order No.
for crimp contacts 16A	TL01	198 001 000 0002

More tools detail please find the page 32-03-32-06.

Notes: The tools for crimp terminal may influence the product quality and stability. Please select the tools recognized by our company.

# HEE-018 High density inserts

500V 16A 18+

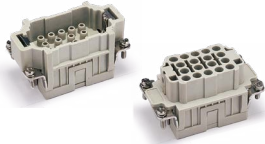


## Inserts

Hoods/Housings: size 10B, detail please find the page15-39~15-69.

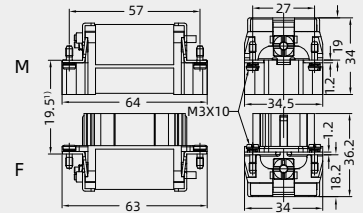
### Crimp terminal

order crimp contacts separately

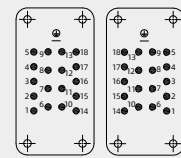


Insert	Designation	Order No.
Male	HEE-018-MC	123 018 010 0001
Female	HEE-018-FC	123 018 020 0001

1) Distance for contact max. 21 mm

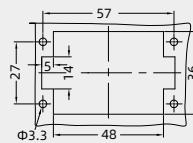


Contact arrangement view from termination side



M F

Panel cut out for inserts for use without hoods/housings



## Crimp contacts

### Crimp contacts 16A

Contact resistance  $\leq 1m\Omega$   
silver plated



gold plated



Male	Order No.	Female	Order No.
CESM-0.37	101 019 110 0301	CESF-0.37	101 019 120 0301
CESM-0.50	101 019 110 0401	CESF-0.50	101 019 120 0401
CESM-0.75	101 019 110 0601	CESF-0.75	101 019 120 0601
CESM-1.0	101 019 110 0801	CESF-1.0	101 019 120 0801
CESM-1.5	101 019 110 0901	CESF-1.5	101 019 120 0901
CESM-2.5	101 019 110 1001	CESF-2.5	101 019 120 1001
CESM-3.0	101 019 110 1101	CESF-3.0	101 019 120 1101
CESM-4.0	101 019 110 1201	CESF-4.0	101 019 120 1201

CEGM-0.37	101 019 210 0301	CEGF-0.37	101 019 220 0301
CEGM-0.50	101 019 210 0401	CEGF-0.50	101 019 220 0401
CEGM-0.75	101 019 210 0601	CEGF-0.75	101 019 220 0601
CEGM-1.0	101 019 210 0801	CEGF-1.0	101 019 220 0801
CEGM-1.5	101 019 210 0901	CEGF-1.5	101 019 220 0901
CEGM-2.5	101 019 210 1001	CEGF-2.5	101 019 220 1001
CEGM-3.0	101 019 210 1101	CEGF-3.0	101 019 220 1101
CEGM-4.0	101 019 210 1201	CEGF-4.0	101 019 220 1201

More crimp contacts 16A see P13-04.

### Tools

#### Crimping tool



#### Contact removal tool

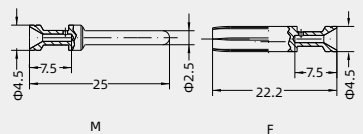


Wire gauge	Designation	Order No.
0.14-4mm <sup>2</sup>	TL02G	198 001 001 0011

Wire gauge: 0.14-0.37mm<sup>2</sup> please select TL02 Crimping tool.

Application	Designation	Order No.
for crimp contacts 16A	TL01	198 001 000 0002

More tools detail please find the page32-03~32-06.



Identification	Wire gauge	Stripping length
no groove	0.14-0.37 mm <sup>2</sup>   AWG 26-22	7.5mm
no groove	0.5 mm <sup>2</sup>   AWG 20	7.5mm
1 groove	0.75 mm <sup>2</sup>   AWG 18	7.5mm
1 groove	1 mm <sup>2</sup>   AWG 18	7.5mm
2 grooves	1.5 mm <sup>2</sup>   AWG 16	7.5mm
3 grooves	2.5 mm <sup>2</sup>   AWG 14	7.5mm
wide groove	3 mm <sup>2</sup>   AWG 12	7.5mm
no groove	4 mm <sup>2</sup>   AWG 12	7.5mm

When the wire gauge is less than 0.75mm<sup>2</sup>, it's better to use the auxiliary pin assembly tool TL15.

Notes: The tools for crimp terminal may influence the product quality and stability. Please select the tools recognized by our company.

# HEE-032 High density inserts

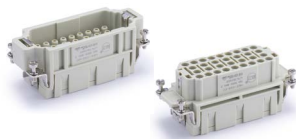
500V 16A 32+



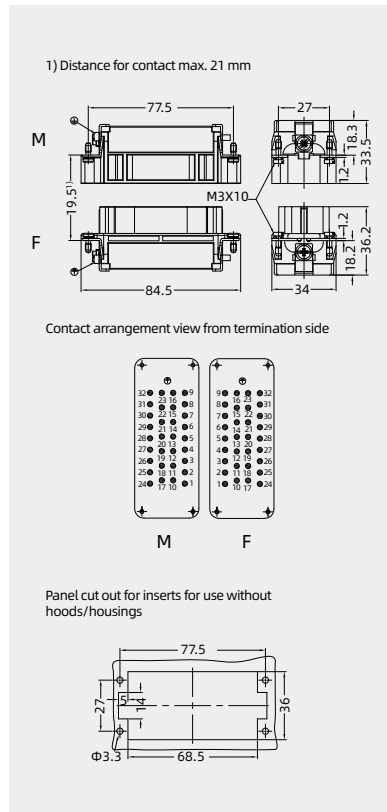
## Inserts

Hoods/Housings: size 16B, please find the details on page 15-70~15-1071.

Crimp terminal  
order crimp contacts separately



Insert	Designation	Order No.
Male	HEE-032-MC	123 032 010 0001
Female	HEE-032-FC	123 032 020 0001



## Crimp contacts

### Crimp contacts 16A

Contact resistance ≤ 1mΩ  
silver plated



gold plated



Male	Order No.	Female	Order No.
CESM-0.37	101 019 110 0301	CESF-0.37	101 019 120 0301
CESM-0.50	101 019 110 0401	CESF-0.50	101 019 120 0401
CESM-0.75	101 019 110 0601	CESF-0.75	101 019 120 0601
CESM-1.0	101 019 110 0801	CESF-1.0	101 019 120 0801
CESM-1.5	101 019 110 0901	CESF-1.5	101 019 120 0901
CESM-2.5	101 019 110 1001	CESF-2.5	101 019 120 1001
CESM-3.0	101 019 110 1101	CESF-3.0	101 019 120 1101
CESM-4.0	101 019 110 1201	CESF-4.0	101 019 120 1201
CEGM-0.37	101 019 210 0301	CEGF-0.37	101 019 220 0301
CEGM-0.50	101 019 210 0401	CEGF-0.50	101 019 220 0401
CEGM-0.75	101 019 210 0601	CEGF-0.75	101 019 220 0601
CEGM-1.0	101 019 210 0801	CEGF-1.0	101 019 220 0801
CEGM-1.5	101 019 210 0901	CEGF-1.5	101 019 220 0901
CEGM-2.5	101 019 210 1001	CEGF-2.5	101 019 220 1001
CEGM-3.0	101 019 210 1101	CEGF-3.0	101 019 220 1101
CEGM-4.0	101 019 210 1201	CEGF-4.0	101 019 220 1201

More crimp contacts 16A see P13-04.

### Tools

Crimping tool

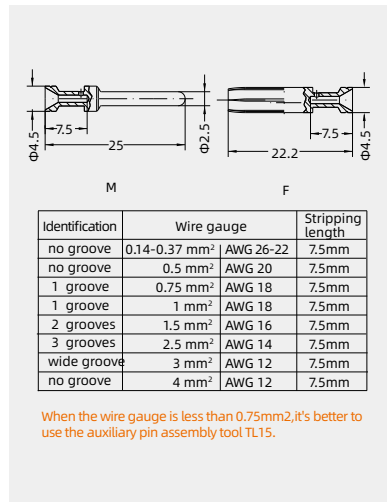


Contact removal tool



Wire gauge	Designation	Order No.
0.14-4mm <sup>2</sup>	TL02G	198 001 001 0011
Wire gauge: 0.14-0.37mm <sup>2</sup> please select TL02 Crimping tool.		
Application	Designation	Order No.
for crimp contacts 16A	TL01	198 001 000 0002

More tools detail please find the page 32-03-32-06.



Notes: The tools for crimp terminal may influence the product quality and stability. Please select the tools recognized by our company.

# HEE-046 High density inserts

500V 16A 46+

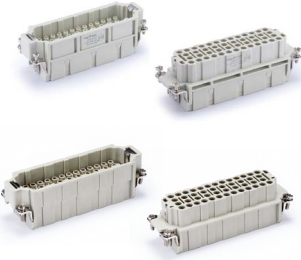


## Inserts

Hoods/Housings: size 24B, please find the details on page 15-108~15-150.

### Crimp terminal

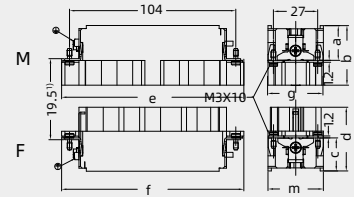
order crimp contacts separately



Insert	Designation	Order No.
Male	HEE-046-MC	123 046 010 0011
Female	HEE-046-FC	123 046 020 0011
Male	HEE-046-MC/N <sup>2)</sup>	123 046 010 0101
Female	HEE-046-FC/N <sup>2)</sup>	123 046 020 0101

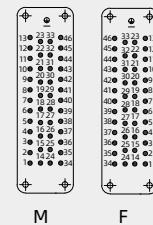
2) for crimp contacts 16A-Enhanced III, see page 13-04.

1) Distance for contact max. 21 mm

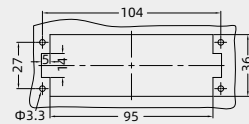


	a	b	e	g	c	d	f	m
M/F	18.5	33.8	110.5	34.4	18.3	36.2	110	34.4
MC/FC	18.3	33.8	110	34.4	18.2	36.2	110	34.4

Contact arrangement view from termination side



Panel cut out for inserts for use without hoods/housings



## Crimp contacts

### Crimp contacts 16A

Contact resistance ≤ 1mΩ silver plated



gold plated



Male	Order No.	Female	Order No.
CESM-0.37	101 019 110 0301	CESF-0.37	101 019 120 0301
CESM-0.50	101 019 110 0401	CESF-0.50	101 019 120 0401
CESM-0.75	101 019 110 0601	CESF-0.75	101 019 120 0601
CESM-1.0	101 019 110 0801	CESF-1.0	101 019 120 0801
CESM-1.5	101 019 110 0901	CESF-1.5	101 019 120 0901
CESM-2.5	101 019 110 1001	CESF-2.5	101 019 120 1001
CESM-3.0	101 019 110 1101	CESF-3.0	101 019 120 1101
CESM-4.0	101 019 110 1201	CESF-4.0	101 019 120 1201
CEGM-0.37	101 019 210 0301	CEGF-0.37	101 019 220 0301
CEGM-0.50	101 019 210 0401	CEGF-0.50	101 019 220 0401
CEGM-0.75	101 019 210 0601	CEGF-0.75	101 019 220 0601
CEGM-1.0	101 019 210 0801	CEGF-1.0	101 019 220 0801
CEGM-1.5	101 019 210 0901	CEGF-1.5	101 019 220 0901
CEGM-2.5	101 019 210 1001	CEGF-2.5	101 019 220 1001
CEGM-3.0	101 019 210 1101	CEGF-3.0	101 019 220 1101
CEGM-4.0	101 019 210 1201	CEGF-4.0	101 019 220 1201

More crimp contacts 16A see P13-04.

### Tools

Crimping tool



Contact removal tool



Wire gauge	Designation	Order No.
0.14-4mm <sup>2</sup>	TL02G	198 001 001 0011
Wire gauge: 0.14-0.37mm <sup>2</sup> please select TL02 Crimping tool.		
Application	Designation	Order No.
for crimp contacts 16A	TL01	198 001 000 0002


More tools detail please find the page 32-03~32-06.

Identification	Wire gauge	Stripping length
no groove	0.14-0.37 mm <sup>2</sup>   AWG 26-22	7.5mm
no groove	0.5 mm <sup>2</sup>   AWG 20	7.5mm
1 groove	0.75 mm <sup>2</sup>   AWG 18	7.5mm
2 grooves	1 mm <sup>2</sup>   AWG 18	7.5mm
3 grooves	1.5 mm <sup>2</sup>   AWG 16	7.5mm
wide groove	2.5 mm <sup>2</sup>   AWG 14	7.5mm
no groove	3 mm <sup>2</sup>   AWG 12	7.5mm
no groove	4 mm <sup>2</sup>   AWG 12	7.5mm

When the wire gauge is less than 0.75mm<sup>2</sup>, it's better to use the auxiliary pin assembly tool TL15.

Notes: The tools for crimp terminal may influence the product quality and stability. Please select the tools recognized by our company.

HEE-046 Quick-in Module

500V 16A 46+ 

Inserts



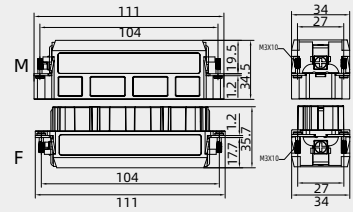
Hoods/Housings: size 24B, please find the details on page 15-108~15-150.

Spring terminal (Quick-in)

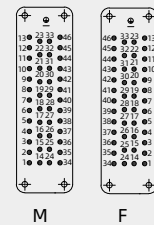


Insert	Designation	Order No.
Male	HEE-046-MQ	123 046 001 0001
Female	HEE-046-FQ	123 046 002 0001

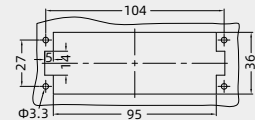
1) Distance for contact max. 21 mm



Contact arrangement view from termination side

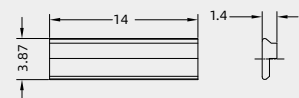


Panel cut out for inserts for use without hoods/housings




Coding element

Description	Designation	Order No.
coding, pokayoke	CODE-I	198 002 005 0035





## HEE-032x2 High density inserts

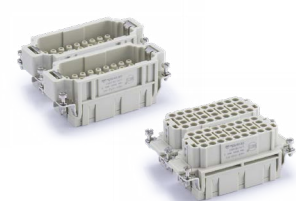
500V 16A 64+ 

## Inserts

Hoods/Housings: size 32B, please find the details on page 15-151~15-159.

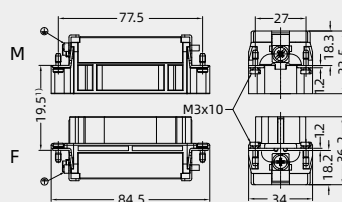
## Crimp terminal

order crimp contacts separately

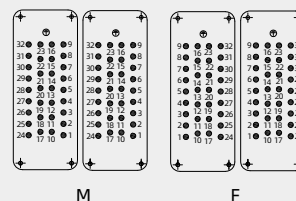


Insert	Designation	Order No.
Male	HEE-032-MC	123 032 010 0001
	HEE-032-MC(33-64)	123 032 010 0002
Female	HEE-032-FC	123 032 020 0001
	HEE-032-FC(33-64)	123 032 020 0002

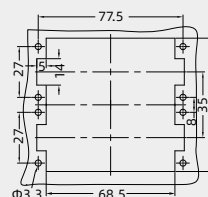
1) Distance for contact max. 21 mm



Contact arrangement view from termination side



Panel cut out for inserts for use without hoods/housings



## Crimp contacts

## Crimp contacts 16A

Contact resistance  $\leq 1\text{m}\Omega$   
silver plated

gold plated



More crimp contacts 16A see P13-04.

## Tools

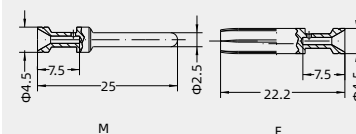
## Crimping tool



## Contact removal tool



Male	Order No.	Female	Order No.
CESM-0.37	101 019 110 0301	CESF-0.37	101 019 120 0301
CESM-0.50	101 019 110 0401	CESF-0.50	101 019 120 0401
CESM-0.75	101 019 110 0601	CESF-0.75	101 019 120 0601
CESM-1.0	101 019 110 0801	CESF-1.0	101 019 120 0801
CESM-1.5	101 019 110 0901	CESF-1.5	101 019 120 0901
CESM-2.5	101 019 110 1001	CESF-2.5	101 019 120 1001
CESM-3.0	101 019 110 1101	CESF-3.0	101 019 120 1101
CESM-4.0	101 019 110 1201	CESF-4.0	101 019 120 1201
CEGM-0.37	101 019 210 0301	CEGF-0.37	101 019 220 0301
CEGM-0.50	101 019 210 0401	CEGF-0.50	101 019 220 0401
CEGM-0.75	101 019 210 0601	CEGF-0.75	101 019 220 0601
CEGM-1.0	101 019 210 0801	CEGF-1.0	101 019 220 0801
CEGM-1.5	101 019 210 0901	CEGF-1.5	101 019 220 0901
CEGM-2.5	101 019 210 1001	CEGF-2.5	101 019 220 1001
CEGM-3.0	101 019 210 1101	CEGF-3.0	101 019 220 1101
CEGM-4.0	101 019 210 1201	CEGF-4.0	101 019 220 1201



Identification	Wire gauge	Stripping length
no groove	0.14-0.37 mm <sup>2</sup> AWG 26-22	7.5mm
no groove	0.5 mm <sup>2</sup> AWG 20	7.5mm
1 groove	0.75 mm <sup>2</sup> AWG 18	7.5mm
1 groove	1 mm <sup>2</sup> AWG 18	7.5mm
2 grooves	1.5 mm <sup>2</sup> AWG 16	7.5mm
3 grooves	2.5 mm <sup>2</sup> AWG 14	7.5mm
wide groove	3 mm <sup>2</sup> AWG 12	7.5mm
no groove	4 mm <sup>2</sup> AWG 12	7.5mm

When the wire gauge is less than 0.75mm<sup>2</sup>, it's better to use the auxiliary pin assembly tool TL15.


Wire gauge	Designation	Order No.
0.14-4mm <sup>2</sup>	TL02G	198 001 001 0011
Wire gauge: 0.14-0.37mm <sup>2</sup> please select TL02 Crimping tool.		
Application	Designation	Order No.
for crimp contacts 16A	TL01	198 001 000 0002

More tools detail please find the page 32-03~32-06.

Notes: The tools for crimp terminal may influence the product quality and stability. Please select the tools recognized by our company.



## HEE-040 High density inserts

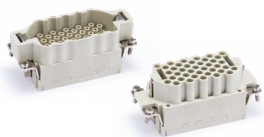
500V 16A 40+ 

## Inserts

Hoods/Housings: size 16B, please find the details on page 15-70~15-1071.

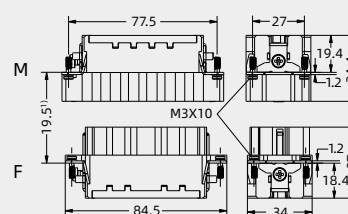
## Crimp terminal

order crimp contacts separately

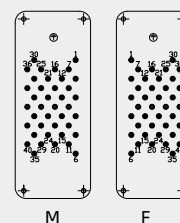


Insert	Designation	Order No.
Male	HEE-040-MC	123 040 010 0001
Female	HEE-040-FC	123 040 020 0001

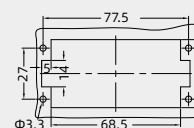
1) Distance for contact max. 21 mm



Contact arrangement view from termination side



Panel cut out for inserts for use without hoods/housings



## Crimp contacts

## Crimp contacts 16A

Contact resistance  $\leq 1\text{m}\Omega$   
silver plated

gold plated



Male	Order No.	Female	Order No.
CESM-0.37	101 019 110 0301	CESF-0.37	101 019 120 0301
CESM-0.50	101 019 110 0401	CESF-0.50	101 019 120 0401
CESM-0.75	101 019 110 0601	CESF-0.75	101 019 120 0601
CESM-1.0	101 019 110 0801	CESF-1.0	101 019 120 0801
CESM-1.5	101 019 110 0901	CESF-1.5	101 019 120 0901
CESM-2.5	101 019 110 1001	CESF-2.5	101 019 120 1001
CESM-3.0	101 019 110 1101	CESF-3.0	101 019 120 1101
CESM-4.0	101 019 110 1201	CESF-4.0	101 019 120 1201
CEGM-0.37	101 019 210 0301	CEGF-0.37	101 019 220 0301
CEGM-0.50	101 019 210 0401	CEGF-0.50	101 019 220 0401
CEGM-0.75	101 019 210 0601	CEGF-0.75	101 019 220 0601
CEGM-1.0	101 019 210 0801	CEGF-1.0	101 019 220 0801
CEGM-1.5	101 019 210 0901	CEGF-1.5	101 019 220 0901
CEGM-2.5	101 019 210 1001	CEGF-2.5	101 019 220 1001
CEGM-3.0	101 019 210 1101	CEGF-3.0	101 019 220 1101
CEGM-4.0	101 019 210 1201	CEGF-4.0	101 019 220 1201

More crimp contacts 16A see P13-04.

## Tools

## Crimping tool

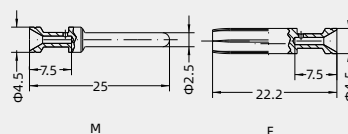


## Contact removal tool



Wire gauge	Designation	Order No.
0.14-4mm <sup>2</sup>	TL02G	198 001 001 0011
Wire gauge: 0.14-0.37mm <sup>2</sup> please select TL02 Crimping tool.		
Application	Designation	Order No.
for crimp contacts 16A	TL01	198 001 000 0002

More tools detail please find the page 32-03~32-06.



Identification	Wire gauge	Stripping length
no groove	0.14-0.37 mm <sup>2</sup> AWG 26-22	7.5mm
no groove	0.5 mm <sup>2</sup> AWG 20	7.5mm
1 groove	0.75 mm <sup>2</sup> AWG 18	7.5mm
1 groove	1 mm <sup>2</sup> AWG 18	7.5mm
2 grooves	1.5 mm <sup>2</sup> AWG 16	7.5mm
3 grooves	2.5 mm <sup>2</sup> AWG 14	7.5mm
wide groove	3 mm <sup>2</sup> AWG 12	7.5mm
no groove	4 mm <sup>2</sup> AWG 12	7.5mm

When the wire gauge is less than 0.75mm<sup>2</sup>, it's better to use the auxiliary pin assembly tool TL15.

Notes: The tools for crimp terminal may influence the product quality and stability. Please select the tools recognized by our company.

# HEE-064 High density inserts

500V 16A 64+

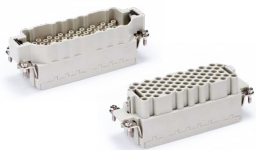


## Inserts

Hoods/Housings: size 24B, please find the details on page 15-108~15-150.

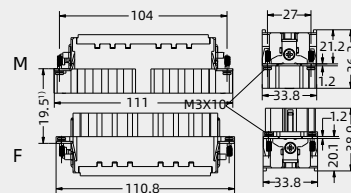
### Crimp terminal

order crimp contacts separately

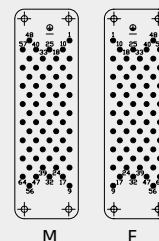


Insert	Designation	Order No.
Male	HEE-064-MC	123 064 010 0001
Female	HEE-064-FC	123 064 020 0001

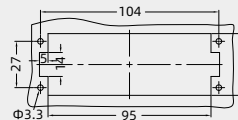
1) Distance for contact max. 21 mm



Contact arrangement view from termination side



Panel cut out for inserts for use without hoods/housings



## Crimp contacts

### Crimp contacts 16A

Contact resistance  $\leq 1m\Omega$   
silver plated



gold plated



Male	Order No.	Female	Order No.
CESM-0.37	101 019 110 0301	CESF-0.37	101 019 120 0301
CESM-0.50	101 019 110 0401	CESF-0.50	101 019 120 0401
CESM-0.75	101 019 110 0601	CESF-0.75	101 019 120 0601
CESM-1.0	101 019 110 0801	CESF-1.0	101 019 120 0801
CESM-1.5	101 019 110 0901	CESF-1.5	101 019 120 0901
CESM-2.5	101 019 110 1001	CESF-2.5	101 019 120 1001
CESM-3.0	101 019 110 1101	CESF-3.0	101 019 120 1101
CESM-4.0	101 019 110 1201	CESF-4.0	101 019 120 1201
CEGM-0.37	101 019 210 0301	CEGF-0.37	101 019 220 0301
CEGM-0.50	101 019 210 0401	CEGF-0.50	101 019 220 0401
CEGM-0.75	101 019 210 0601	CEGF-0.75	101 019 220 0601
CEGM-1.0	101 019 210 0801	CEGF-1.0	101 019 220 0801
CEGM-1.5	101 019 210 0901	CEGF-1.5	101 019 220 0901
CEGM-2.5	101 019 210 1001	CEGF-2.5	101 019 220 1001
CEGM-3.0	101 019 210 1101	CEGF-3.0	101 019 220 1101
CEGM-4.0	101 019 210 1201	CEGF-4.0	101 019 220 1201

More crimp contacts 16A see P13-04.

### Tools

Crimping tool

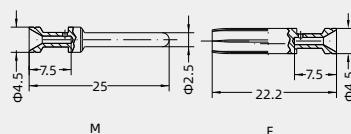


Contact removal tool



Wire gauge	Designation	Order No.
0.14-4mm <sup>2</sup>	TL02G	198 001 001 0011
Wire gauge: 0.14-0.37mm <sup>2</sup> please select TL02 Crimping tool.		
Application	Designation	Order No.
for crimp contacts 16A	TL01	198 001 000 0002

More tools detail please find the page 32-03-32-06.



Identification	Wire gauge	Stripping length
no groove	0.14-0.37 mm <sup>2</sup>   AWG 26-22	7.5mm
no groove	0.5 mm <sup>2</sup>   AWG 20	7.5mm
1 groove	0.75 mm <sup>2</sup>   AWG 18	7.5mm
1 groove	1 mm <sup>2</sup>   AWG 18	7.5mm
2 grooves	1.5 mm <sup>2</sup>   AWG 16	7.5mm
3 grooves	2.5 mm <sup>2</sup>   AWG 14	7.5mm
wide groove	3 mm <sup>2</sup>   AWG 12	7.5mm
no groove	4 mm <sup>2</sup>   AWG 12	7.5mm

When the wire gauge is less than 0.75mm<sup>2</sup>, it's better to use the auxiliary pin assembly tool TL15.

Notes: The tools for crimp terminal may influence the product quality and stability. Please select the tools recognized by our company.